

**PREMIUM BESPOKE SOLUTIONS
FOR THE 21ST CENTURY**

PASSENGER LIFTS



**PREMIER
COLLECTION**

LIFT SOURCE
(UK) LTD

ELECTRATEC PLUS

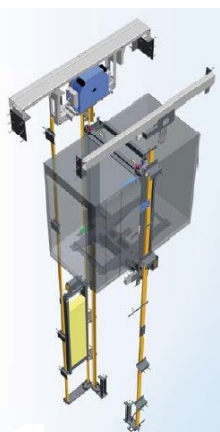
ENERGY EFFICIENT

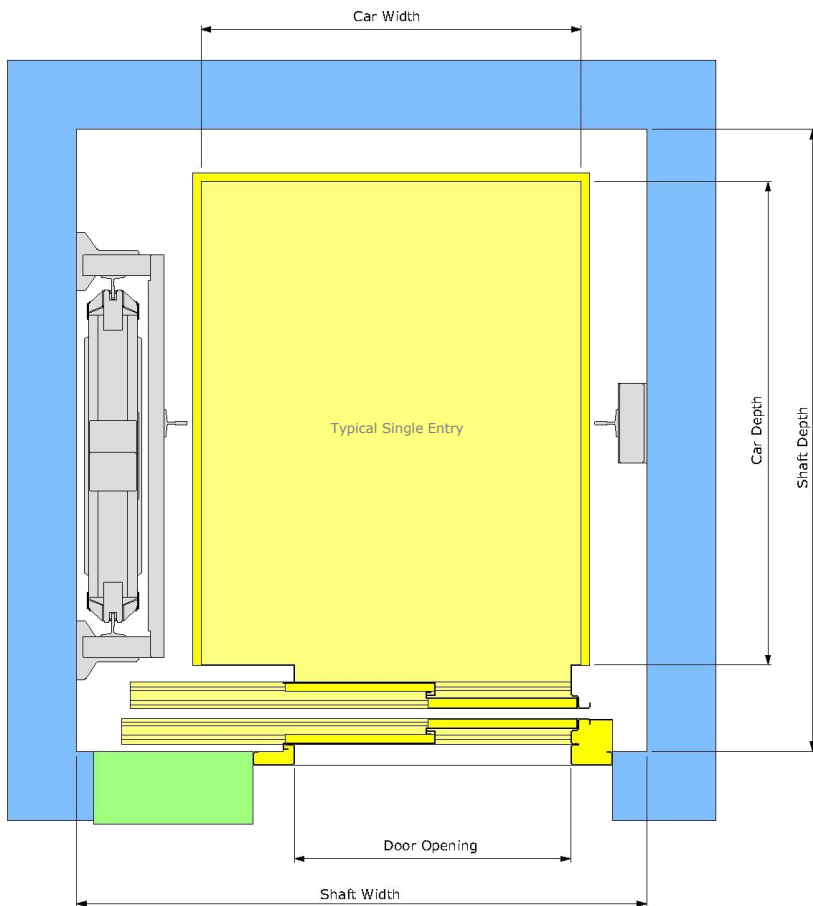
Our superior electric traction lift provides an enhanced lift car appearance and an improved scope for bespoke equipment design. This new product complies with all of the relevant UK standards and regulations as of January 2015.

- EN81-1 Lift Directive.
- EN81-70 DDA conformity.
- EN81-28 Remote communication conformity.
- Return to ground in the event of fire (Full EN81-73 upgrade available).
- Building Regulations 2010 - Approved document M - Access to and use of buildings.
- Upgrade option to evacuation and fire-fighting lifts.

Main Features

- Energy saving design, average 70% on conventional systems.
- Facilitate recognition within BREEAM.
- Machine room less design (integrated control cabinet).
- 8, 10 and 13 person lifts as standard (option up to 3000kg load capacity).
- Bespoke designs tailored to suit various building restrictions.
- Single entry, open through and adjacent solutions available.
- Stainless steel car/landing doors and frames as standard.
- 900mm wide side opening doors as standard - two hour fire-rated (option up to 1600mm wide).
- Car and landing indicators at all floors utilising latest technology.
- Down collective control gearless technology.
- Fault logging and event history for ease of maintenance.
- All maintenance carried out at landings.
- Open protocol design.





- Shaft
- Car / Doors / Frames
- Control Cabinet

Cabinet is usually located at the highest floor, can be positioned at other floors or remote to the shaft through consultation

Standard Models (Single Entry)				
Number of Persons	8	10	13	
Load (kg)	630	800	1000	
Car Width (mm)	1100	1350	1100	1400
Car Depth (mm)	1400	1400	2100	1600
Door Opening (mm)	800 / 900	800 / 900	800 / 900	
Shaft Width (mm)	1600	1850	1600	1900
Shaft Depth (mm) *	1800	1800	2500	2000
Pit Height (mm) *	1200	1200	1200	
Headroom (mm) *	3600	3600	3600	

* Recommended minimum, reduction can be achieved through consultation. Headroom inclusive of lifting beam, positioned to utilise the space efficiently

For larger or special lift solutions please liaise with our technical design team

ELECTRATEC COMPACT ENERGY EFFICIENT

REDUCED HEADROOM, REDUCED PIT

Compact Design as Electratec Plus	
Minimum Pit Height (mm)	350
Minimum Headroom (mm)	2650

Our superior electric traction lift can also be provided with a compact design for existing buildings. This design offers a reduced headroom and/or reduced pit, where in some circumstances due to limitations enforced by building constraints, standard requirements are not viable.

- EN81-1 Lift Directive.
- EN81-70 DDA conformity.
- EN81-28 Remote communication conformity.
- EN81-21 Passenger lifts in existing buildings.
- Return to ground in the event of fire (Full EN81-73 upgrade available)
- Building Regulations 2010 - Approved document M - Access to and use of buildings .

Main Features

- As Electratec Plus features.
- Up to 8 person load capacity.
- Larger models available - pit and headroom sizes determined through specific engineering assessment.
- Additional safety devices to accommodate for reduction in safe refuge areas.
- Special designs for existing problematic small shafts.
- Flexible control panel locations to suit building design.

Additional Information & Options (Plus and Compact Designs)

- The drive system can also be right-handed.
- Alternative doors available such as "centre opening". Door openings available up to 1100mm wide, shaft sizes adjusted to suit.
- We utilise many layouts, features and finishes, standard and bespoke to suit building design. Please liaise with our technical design team.
- We can engineer solutions for existing shafts or configurations which are beyond others.
- This product and services are not affiliated, endorsed or certified by BRE Global or its affiliates (BREEAM).

Proven technology for over a decade	✓
Open protocol design	✓
Third party servicing components in UK	✓
No special programming tools required	✓
Re-programmable autodiallers	✓
Simplicity of shaft construction	✓
Shaft scaffold included	✓
Shaft lighting included	✓

Emergency lighting inside car included	✓
Emergency lighting to car top included	✓
Drawing availability in 2 days	✓
Fast track delivery	✓
Highly skilled and trained workforce	✓
12 months post installation maintenance	✓
Extended equipment guarantee (2 years)	✓
Available with GSM (additional cost)	✓

FINISHES PORTFOLIO

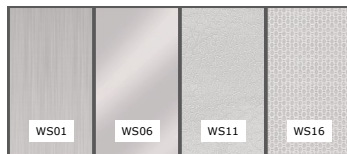
Note: All colours displayed are for guidance only and may differ slightly to the actual material colour.



CAR WALLS

Laminated Steel

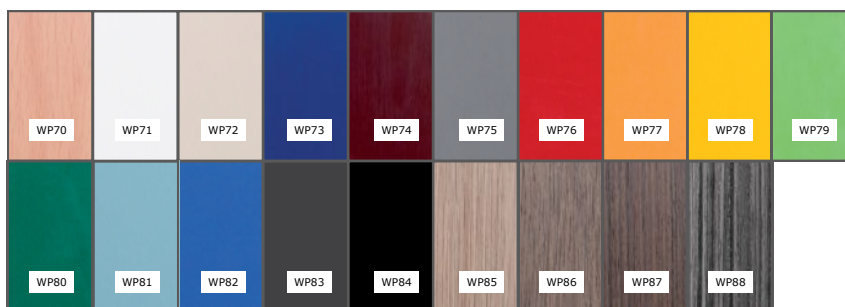
Decorative laminated steel panels that provide an aesthetically pleasing design. Hardwearing, easily cleaned, functional and cost effective.



CAR WALLS

Stainless Steel

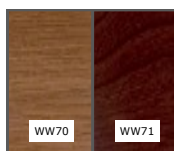
Stainless steel panels provide an alternative solution. Pattern finish provides increased rigidity



CAR WALLS

Plastic Laminate

Polished effect - Modern solution



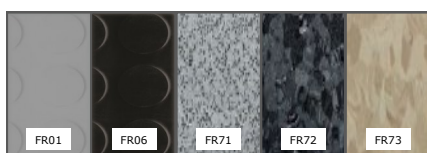
CAR WALLS

Classic Wood Veneer

Combining ageless quality of real wood with modern finishes

Special Bespoke Designs

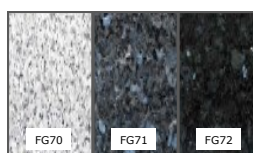
We work in conjunction with designers to offer specific lift car interiors for all types of buildings e.g. architectural glass, special stainless steel or any design concept.



FLOORING

Rubber

Not available with wood veneer



FLOORING

Granite



FLOORING

Marble